

Lenten Gospel Acclamations, Year B

ASH WEDNESDAY - FIFTH WEEK OF LENT

YEAR - B

Michael Andrew Cooney

Acclamation: Setting 1

Musical score for Acclamation: Setting 1. The score is in 3/4 time and B-flat major. It consists of a vocal line and a piano accompaniment. The vocal line has the lyrics: "Praise to you, Lord Je - sus Christ, King of end - less glo - ry!". The piano accompaniment includes the following chords: A7, Dm, G/D, Dm7, B^bmaj7, Am7, and Dm.

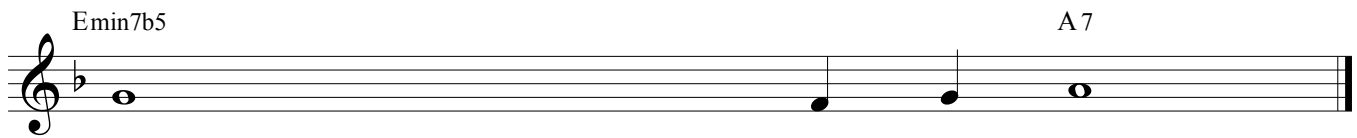
Acclamation: Setting 2

Musical score for Acclamation: Setting 2. The score is in 4/4 time and B-flat major. It consists of a vocal line and a piano accompaniment. The vocal line has the lyrics: "Praise to you, Lord Je - sus Christ, King of end - less glo - ry!". The piano accompaniment includes the following chords: Dm, B^bmaj9/D, Dm7, G/D, D, /C, B^bmaj7, Am7, and Dm.

Verses*



1. If today you hear his voice,
2. One does not live on bread a - lone,
3. From the shining cloud the Father's voice is heard:
4. God so loved the world that he gave his on - ly Son,
5. Whoever serves me must follow me, says the Lord;



1. harden not your hearts.
2. but on every word that comes from the mouth of God.
3. This is my beloved Son, listen to him.
4. So that everyone who believes in him might have e - ter - nal life.
5. and where I am, there also will my ser - vant be.

***Gospel Acclamation Verses - YEAR B**

Ash Wednesday (Psalm 95:8) - **Verse 1**

First Sunday of Lent (Matthew 4:4b) - **Verse 2**

Second Sunday of Lent (Matthew 17:5) - **Verse 3**

Third and Fourth Sunday of Lent (John 3:16) - **Verse 4**

Fifth Sunday of Lent (John 12:26) - **Verse 5**